

ADP65 Air Pressure Switch



- Adjusting range: 20 - 30 Pa
- Maximum inlet pressure: 5000 Pa
- Switching hysteresis: 8 - 18 Pa
- Compliant with 73/23/EEC
- IP65 rating
- Kit includes tubing and pitot connections



Application

Pressure switch for air for monitoring positive, negative or differential air or flue gas pressure. When combined with a Duomo interlock system, can be used to prove that adequate ventilation is in place before initiating the gas supply to a kitchen or laboratory.

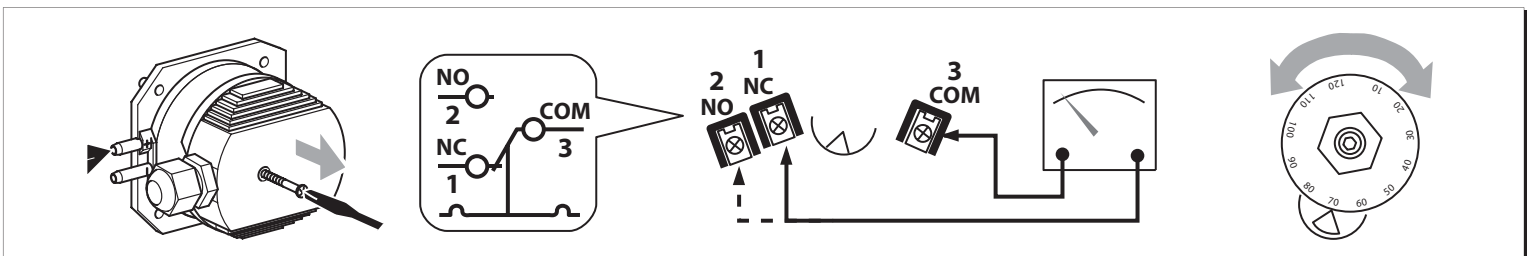
Operation

The ADP65 Air Pressure Switch works by switching over a relay contact when a difference in pressure is present. The pressure at which switching occurs can be set by altering a dial on the face of the ADP65.

Adjusting the switching pressure (ps)

The switching pressure can be adjusted using the hand setting dial and scale. The switching pressure has a tolerance of $\pm 15\%$ from the set nominal value, adjusted in rising pressure and with a vertical diaphragm.

Disconnect the system from the electrical power supply



WARNING! Incorrect installation, adjustment, modification, operation or maintenance may cause injury or material damage. Read the instructions before use. This unit must be installed in accordance with the regulations in force.

Installation Instructions

Only if the diaphragm is installed vertically will the switching pressure (p_s) correspond to the scale value (SK).

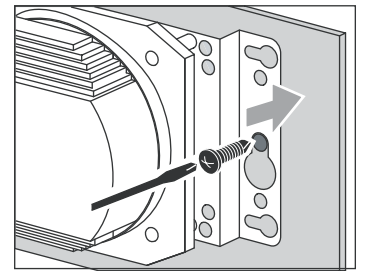
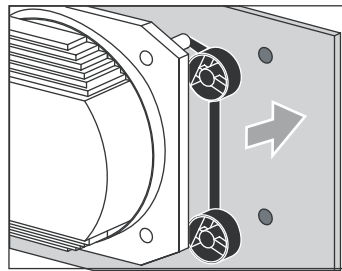
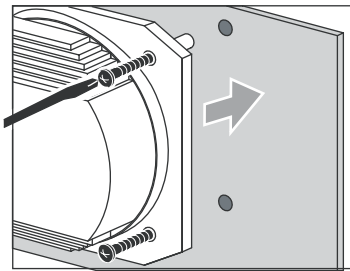
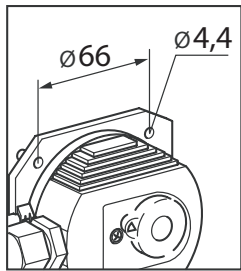
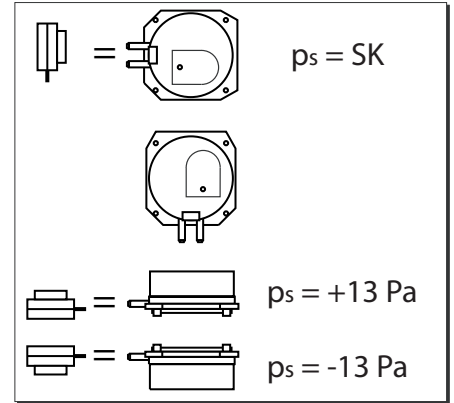
During the installation work ensure that no dirt and moisture can penetrate the open ventilation port.

Use the filter mat at the open connection if the electrical contacts in the ADP65 become soiled as the result of dirt particles in the surrounding air/in the medium.

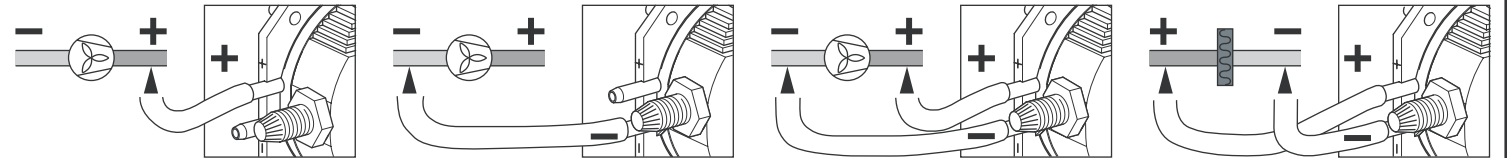
Avoid subjecting the ADP65 to strong or violent vibrations.

Install the ADP65 by bolting it, using a retaining clip or a bracket.

If the ADP65 is bolted, use a maximum of two screws to prevent stresses on the ADP65.



Connect the 4.75mm Ø hose Max. inlet pressure $p_{Max.} = 5000 \text{ Pa}$.



Testing

We recommend a function check once a year (mains voltage, switching pressure, ambient temperature and enclosure – see type label).

